

Discover Xdrop[®] for cells

Microfluidics technology that enables rapid and accurate functional analyses with single-cell resolution

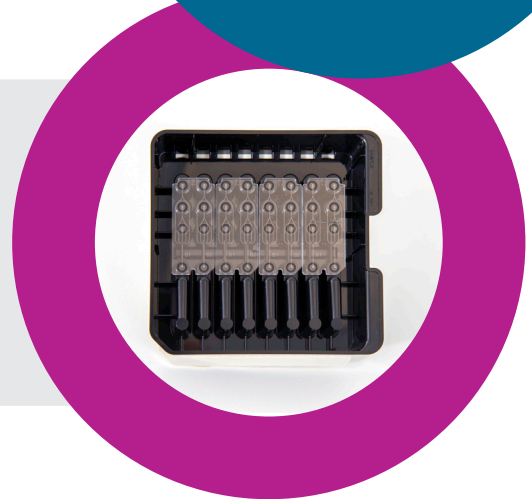
Xdrop

- Automated generation of picoliter double-emulsion droplets to encapsulate living cells for incubation, analysis, and sorting
- An intuitive touchscreen interface
- Rapid droplet production times
- A benchtop footprint that any lab can accommodate



Xdrop DE Cartridges

- Fully integrated production with all liquids contained in the cartridges, simplifying handling and reducing contamination risk
- Process up to eight samples per run
- Encapsulate millions of cells per run

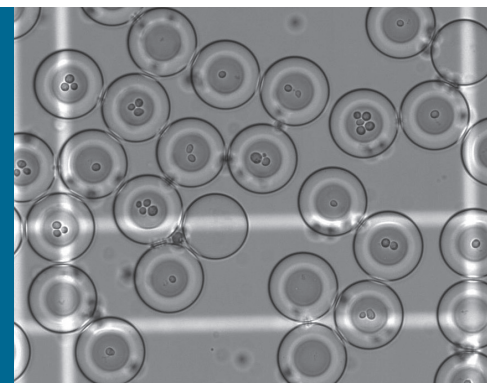
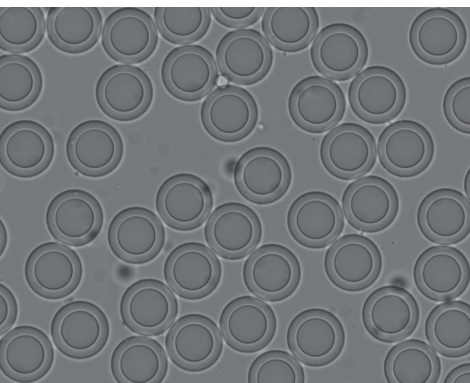


Xdrop DE20 Cartridge

Up to 8 million DE20 droplets per lane in just 40 minutes

Left: DE20 droplets in growth medium

Right: Yeast cells in DE20 droplets

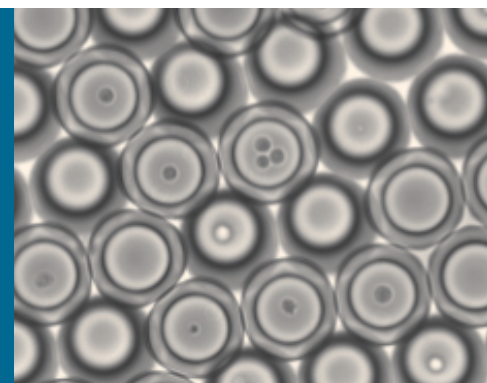
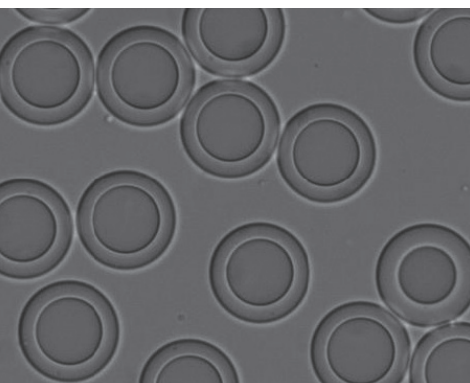


Xdrop DE50 Cartridge

Up to 500,000 DE50 droplets per lane in just 8 minutes

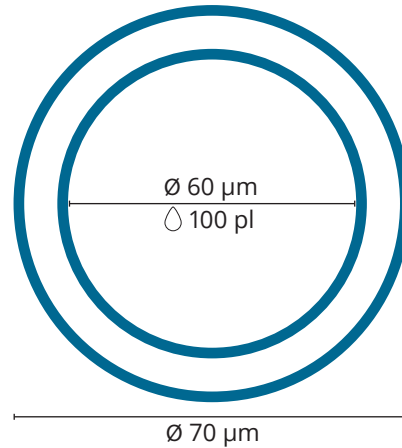
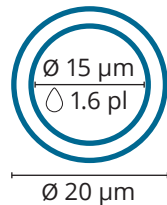
Left: DE50 droplets in growth medium

Right: Natural killer cells in DE50 droplets





Which double-emulsion droplets are the right home for your cell incubation and analyses?

DE20 droplets for microbial cells



DE50 droplets for mammalian cells

Main features

	 DE20	 DE50
Compatible with cells up to 6 µm in diameter and nuclei	✓	✓
Compatible with mammalian cells	✗	✓
Compatible with proteins, including antibodies and cytokines	✓	✓
Uniform droplet size (<5.5% variation in size)	✓	✓
Permeable to gases	✓	✓
Compatible with a range of growth media	✓	✓
Suitable for incubation of encapsulated cells in CO ₂ incubators	✓	✓
Compatible with flow cytometry and FACS	✓	✓
Possible to recover droplet content, including living cells	✓	✓
Suitable for encapsulating DNA and RNA for genomics workflows, including in-droplet PCR	✓	✓

Learn more at [samplix.com](https://www.samplix.com)

Samplix products are for research use only, not for use in any diagnostic procedures. Samplix® and Xdrop® are registered trademarks of Samplix ApS. Copyright© 2022 Samplix ApS